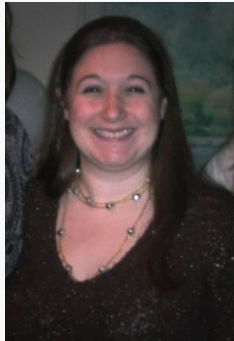




## Robin C. Johnson



### LCSW/LMSW, ACSW, C-SSWS

*Energy Analyst, Business Operations  
Manager*

Robin is an Energy Analyst and Business Operations Manager at Harris Energy Solutions after serving for ten years as a social worker throughout New York and New Jersey. In her time with HES, she has developed experience in building modeling, solar design, and data collection and analysis.

Robin has a passion for environmental sciences and sustainability. Her interest in the environmental sciences drives great strengths in research and development, critical problem solving, as well as analytical thinking.

[Robin@HESconnect.com](mailto:Robin@HESconnect.com)  
<https://www.linkedin.com/in/robincjohnson/>

### Education

New York University, Silver School of Social Work, New York, NY  
May 2010  
Master of Social Work  
University of Connecticut, College of Liberal Arts and Sciences,  
Storrs, CT  
May 2008  
B.S. of Arts, Psychology, Communication Sciences, Minor:  
Anthropology

### Representative Project Experience

- Building Modeling
  - Input required data collected into modeling software to develop building energy efficiency code and inform policy decisions.
- Solar Design
  - Design and create the most effective photovoltaic system taking condition set reports and modeling into account.
- ASHRAE Level II Audit
  - Collect and manage data to help design and create effective photovoltaic systems taking condition set reports and modeling into account
- Data Collection and Analysis
  - Collect and research data for required inputs

### Relevant Experience

- Case manage students classified with Special Education and Related Services (Ages 3-21)
- Write Individualized Education Plans (IEPs)
- Perform biopsychosocial assessments
- Provide individual counseling, social skills and life skills groups
- Assess students for suicidal ideation using the Columbia-Severity Suicide Rating Scale (C-SSRS)
- Connect students and families to outside service providers and resources in the community
- Develop and monitor behavior intervention plans
- Create crisis and safety plans
- Supervise MSW interns
- Train paraprofessionals to work effectively with Special Education students
- Facilitate integration of IEP Direct in district including train staff on programming and procedures
- Complete data submission compliance reports for the New Jersey Department of Education
- Google IT Support Professional Certificate – Feb 2021
- Google Certified Educator Level 1 – Feb 2021
- Google Data Analytics Professional Certificate – Oct 2021